

Employment in the Social Tourism Sector

Anya Diekmann
Université Libre de Bruxelles

adiekman@ulb.ac.be

Overview

- Who is behind this research?
- Objectives of the research
- What is social tourism?
- Research Method
- Provisional outcomes

Commissioners

- BITS
- EFFAT – European Federation for Food, Agriculture and Tourism

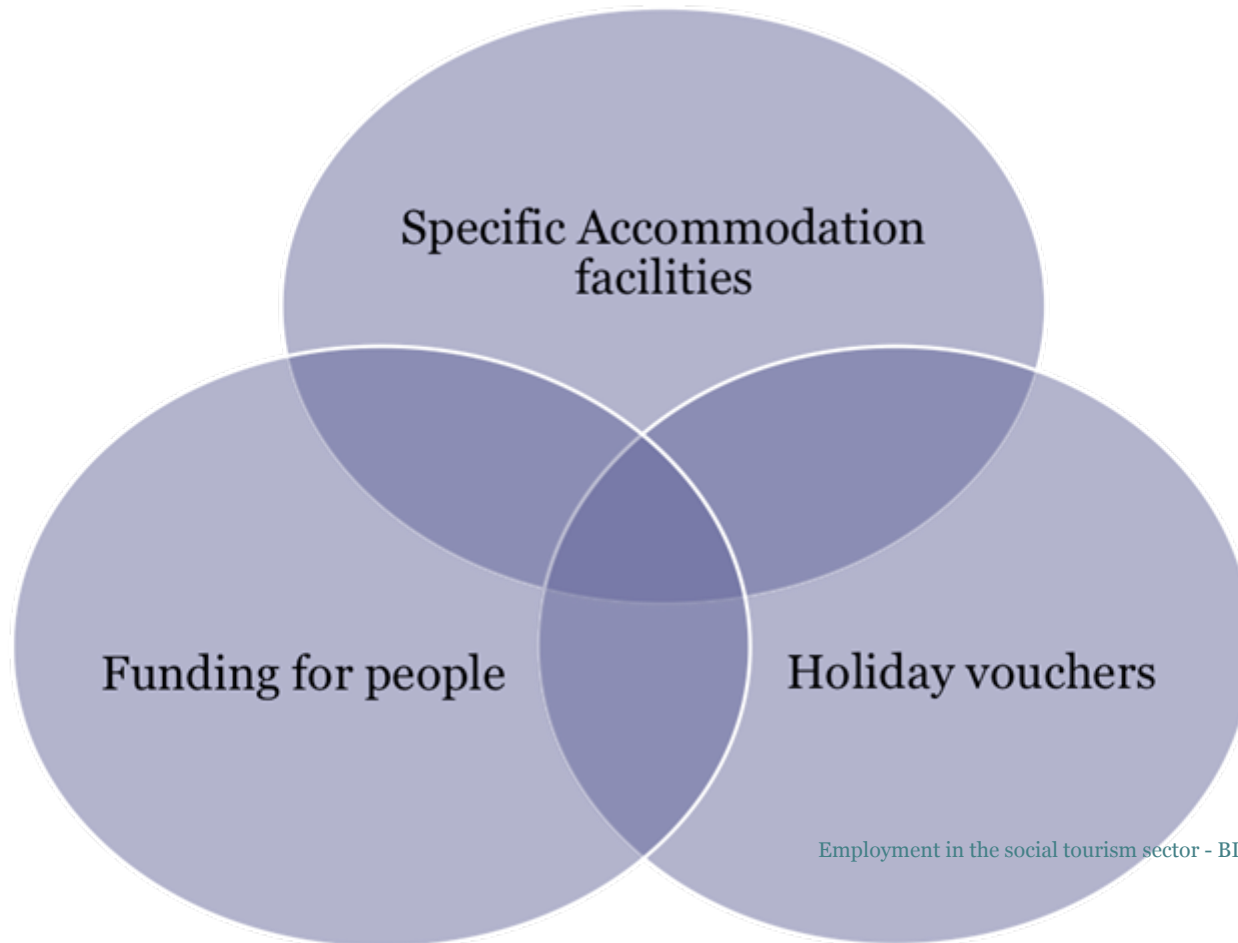
Objectives

- of the research:
 - to obtain comparable figures throughout the whole European community.
 - to identify the importance, the type and the conditions of employment in the social tourism sector as well as the professional qualifications required for these jobs.
- of this presentation:
 - to convince some of you to reply..... 😊😊😊

What is social tourism ?

- “all of the relationships and phenomena resulting from participation in tourism, and in particular from the participation of social strata with modest incomes. This participation is made possible, or facilitated, by measures of a well-defined social nature” BITS

Social tourism structures



Methodology

- In agreement with EFFAT and BITS it has been decided to use two different approaches for the analysis of the employment in the social tourism sector:
 - Quantitative survey
 - Qualitative interviews

Quantitative survey:

- Two questionnaires
 - Section A – addressing national social tourism structures
 - Section B – addressing social tourism accommodation facilities

Section A:

- General information
- Employment and type of bodies
- Number of jobs
- Type of employment contracts
- Perspectives of social tourism
- ...

Section B:

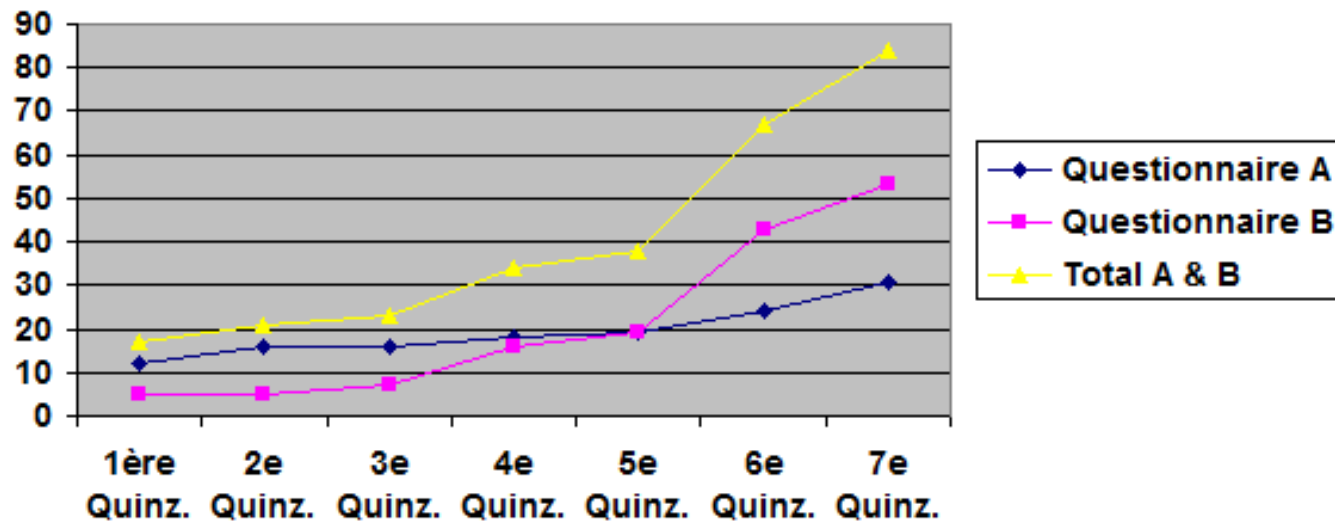
- Direct employment
- Management
- Clients and seasonality
- Location of social tourism assets
- Capacity per location
- Supply of location (activities, accommodation etc)
- Number of jobs according to the location
- Type of contracts (conditions, full time, part-time, seasonality, position,...)
- Qualification of workers in social tourism assets
- Skills of staff members
- Specific requirements for the jobs
- Employment of disabled staff
- ...

Timing



- 04/06: First mail to all EFFAT and BITS members with surveys attached in pdf and websurvey link.
- 26/06: First reminder and deadline extension till 12/09
- 02/09: Second reminder and extension of the deadline
- Since beginning September, non-respondents are given a phone call by a trainee.
- Extension of deadline until 20th October

Feedback.....



	Germany	France	Belgium	Italy	Greece	Hungary
A	8	6	7	8	2	1
B	17	6	31	0	0	0

	Poland	Romania	Ireland	Latvia	Luxemb.	Netherl.	Slovenia
1	1	0	0	0	0	0	0
0	4	0	0	0	0	0	0

	Finland	UK	Austria	Portugal	Spain	Malta	Cyprus
0	0	0	0	0	0	0	0
0	0	0	0	0	0	0	0

	Lithuania	Estonia	Czech R	Sweden	Bulgaria	Slovakia	Denmark
0	0	0	0	0	0	0	0
0	0	0	0	0	0	0	0

Qualitative Survey

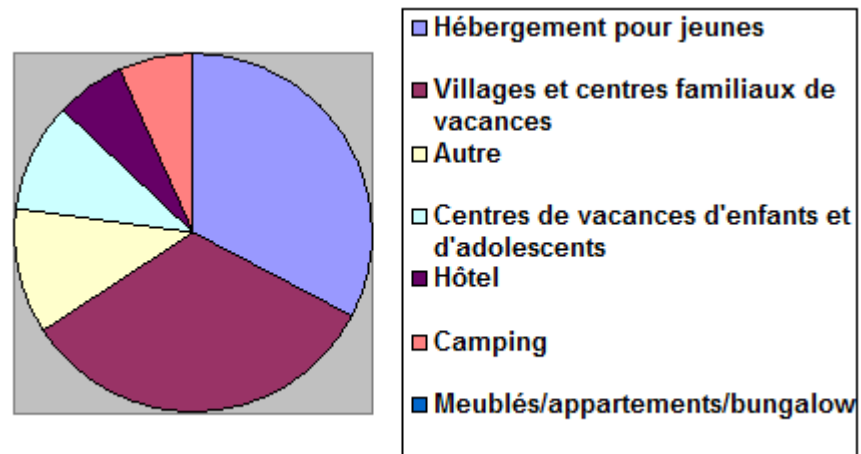
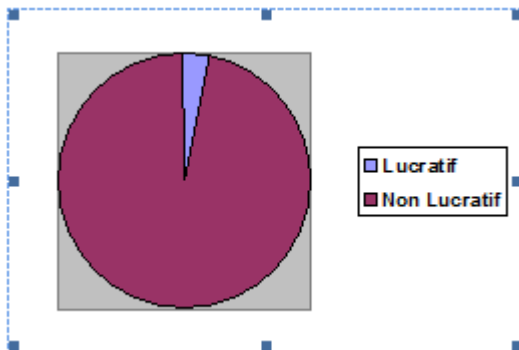
- The aim of the interview is to analyse issues related to social tourism that cannot be tackled by the quantitative survey.
- 7 countries selected
 - Interviews lead by local partners with key persons of the social tourism sector.

Main topics:

- General positioning of the social tourism sector
- Development of the sector
- Employment issues
- Demand side
- Perspectives and general comments

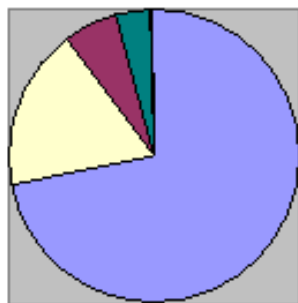
Provisional results

Legal status according to accommodation type (53/53):

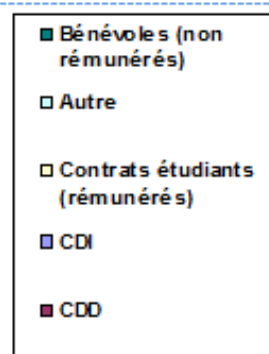
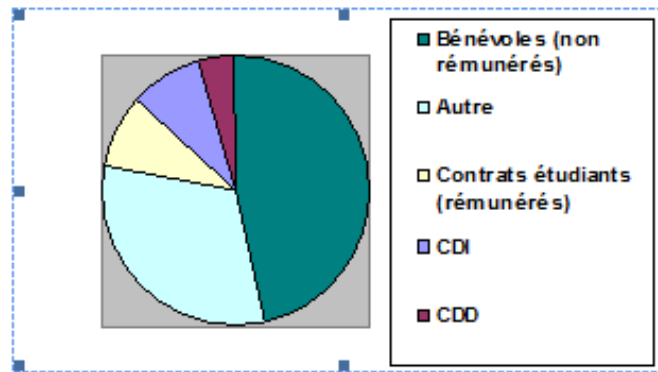


Type of employment

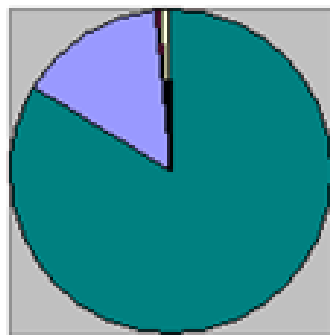
Belgium (7)



Germany (8)



Italy: (7)



Thank you