

# Disenfranchised Community

Dr. Beverly Evans

# INTRODUCTION

- City
- Tax Initiative
- City Survey
- Current Research
- Advisory Board

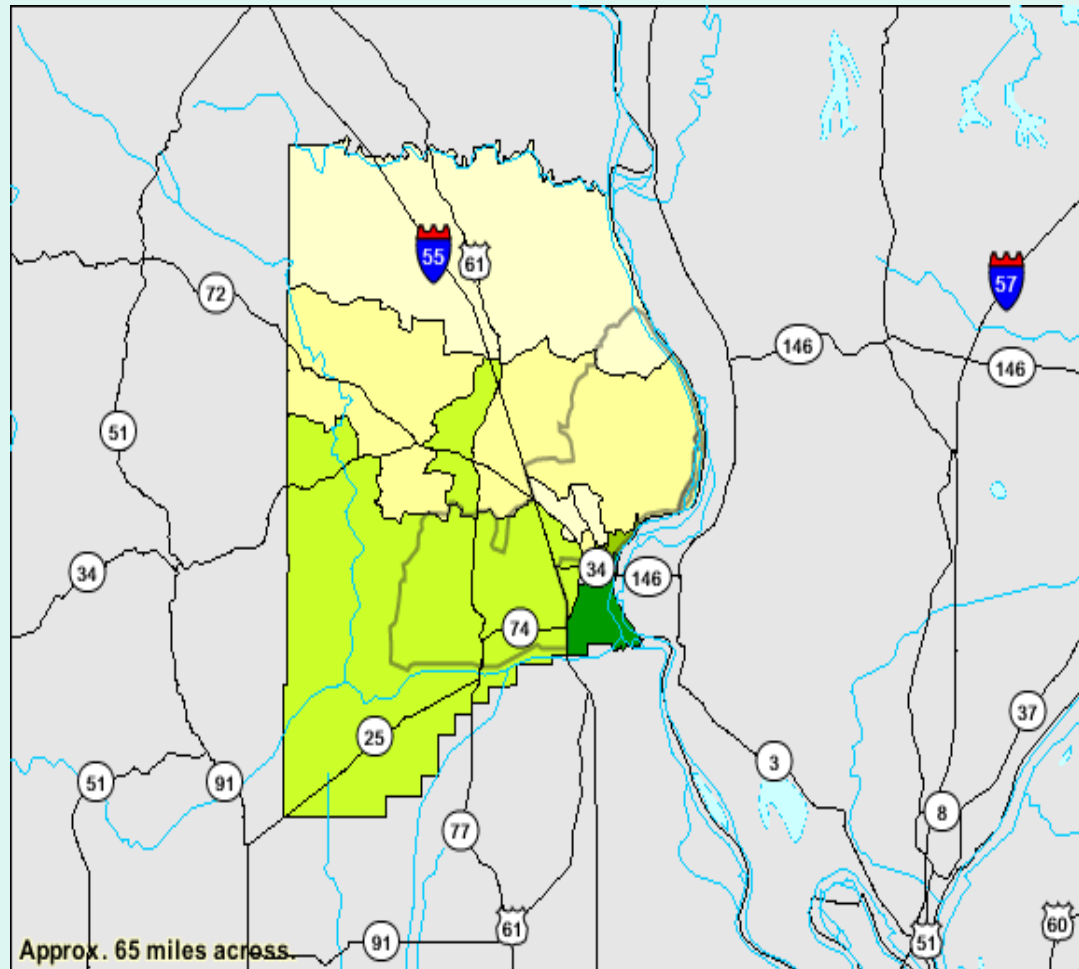
# Background of the City

- Lorimar/Girardot
- Demographics of the City
- Population 32,331
- Demographics of the Target Study Area

# Percent of Individuals Below the Poverty Level

**Dark Green**  
**33.1%-36.4%**  
**(3375)**

23.6%-29%(448)



# Target Neighborhood

- 12K-15k median income
  - 48% below poverty level
  - 55% White, 60% high school diploma
  - 43% Black, 64% high school diploma
  - 15% Black, 20% White some college
- <http://www.semissourian.com/article/20080616/NEWS01/205974829>

# Tax and Storm Water Initiative

- Tax Initiative
  - ¼ cent sales tax increase
  - 25 million
  - 20 million to Parks and Recreation
  - Improvement to all parks and facilities
  - Family Water Park
  - Shawnee Community Center

# City Survey

- Survey
- Focus Groups
  - 6 total
    - Educational and Youth
    - Development
    - Southside
- Issues Identified in this study
  - Geographic, economic and cultural segregation between north and south sectors of the City affecting the attendance at recreational programs
  - Incorporation of parks and trails and greenways into future subdivisions and old neighborhoods

# Issues

- “Badly need a place where low income children can safely play after school and during the summer time”

# Purpose of Current Study

- Understand perceptions of the community and the historical background of the perceptions
  - Issues of Trust
  - Issues of Competition

# Advisory Board

- Stakeholders in Study Area
  - Ward 2 Park and Recreation Advisory Board Member
  - 8 live in the community
  - 4 grew up in the community/ties
  - 2 high school teenagers
- Park and Recreation Staff 2
- Park Board 2
  - Chair of the Subcommittee
  - Board/University representative

# Phase One

- What is the purpose of the advisory board
  - Internal- (14) “information connection between the city and the neighborhood”
  - External- (10) “will be in charge of the new recreation center”

- I trust those in charge to make good decisions for the area
  - Scale (Don't know, Never, Sometimes, Always)
  - City Council 20%
  - Park and Recreation Board 40%
  - Park and Recreation Staff 60%
  - Community Advisory Board 55%

# Issues Identified

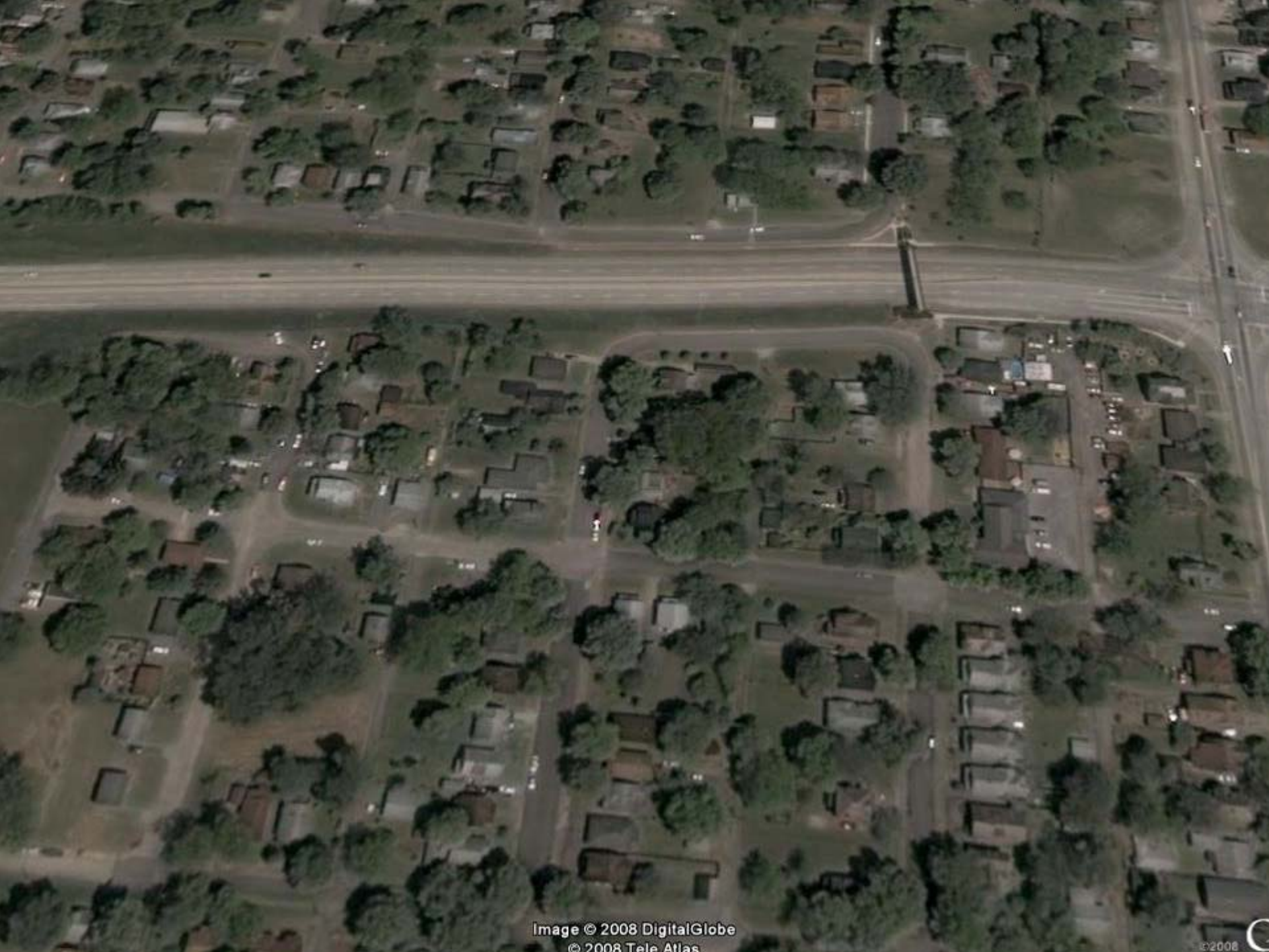
- Feel that city officials do not understand the needs
- Or ignoring the needs
- They trust the people who come into the community to help, but only to a certain extent.
- Who is in charge
- Who pays
- Community needs

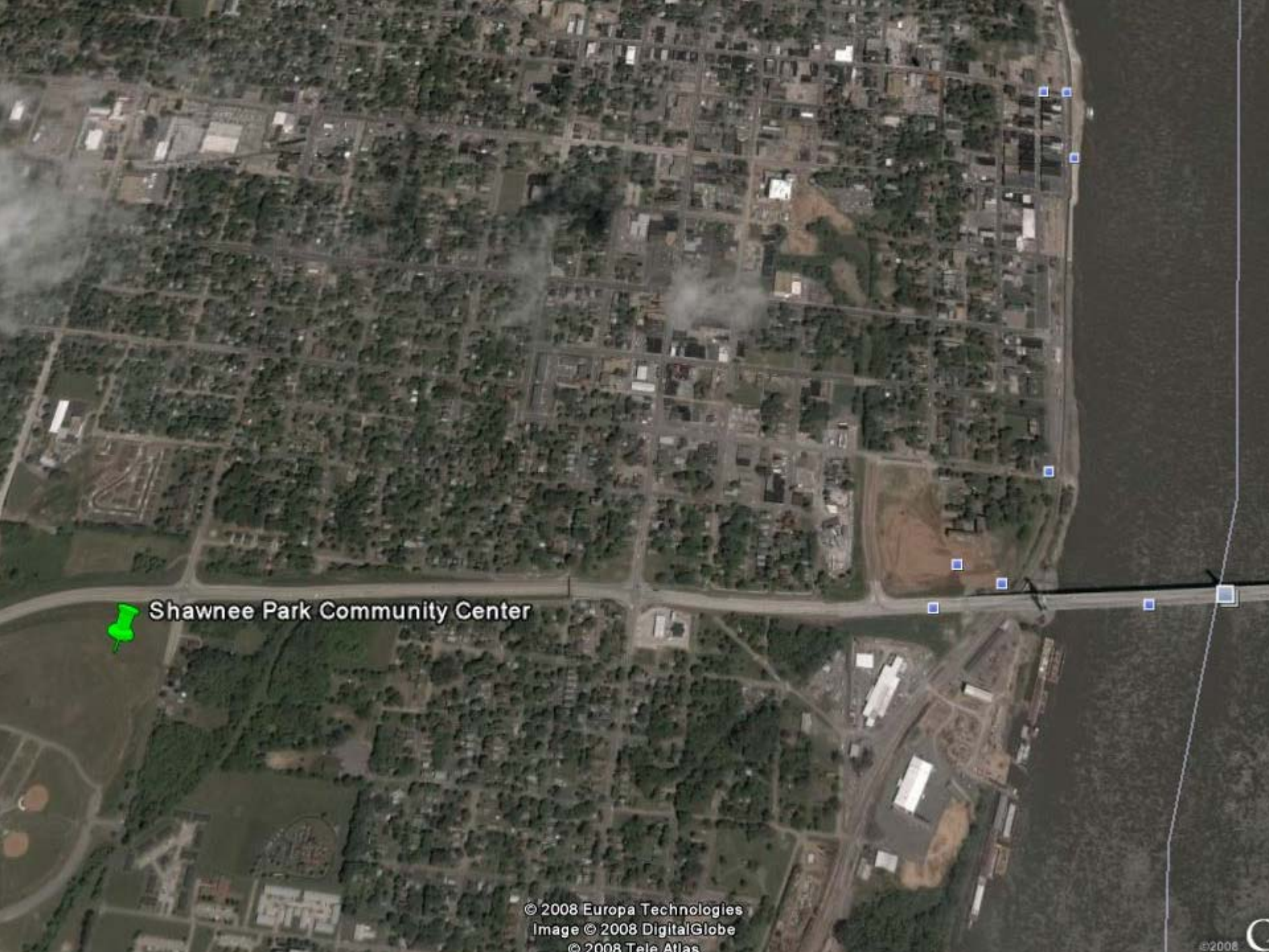
# Developing the Plan

- Advisory Board
  - Dealing with the trust
  - Informational Parties/Meetings
  - Grants in partnership with the university and students.
  - Developing the board
  - Dealing with the financial concerns
  - Safety issues

# New Issue

- How can we get the kids to the center





Shawnee Park Community Center